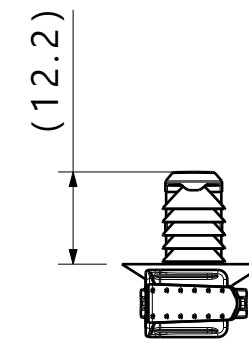
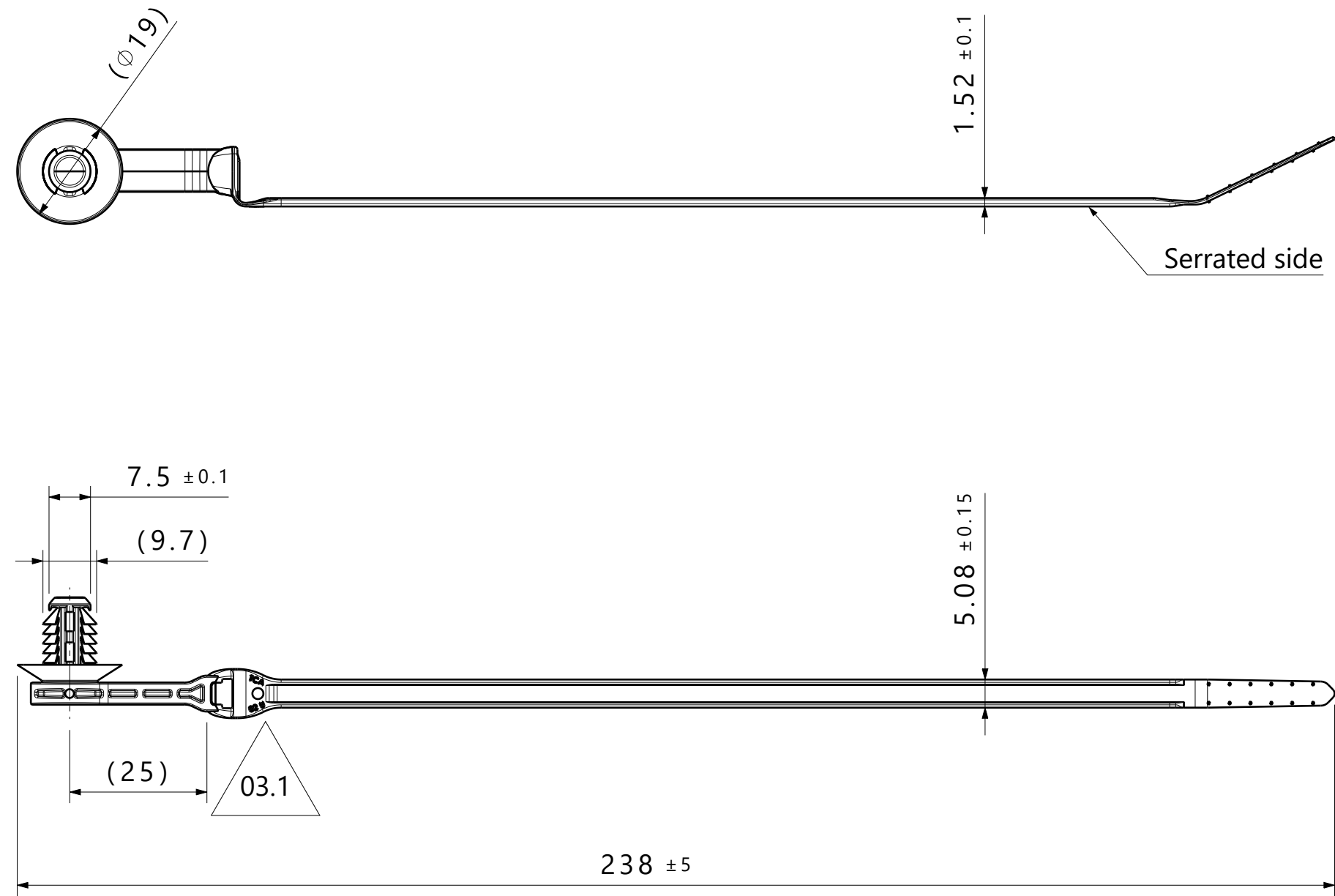


Isometric view



Reference:

Performance requirements at dry as molded:

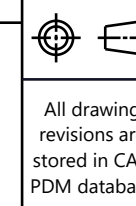
1. Fir tree push in force: 45 newtons (10 lbf) max in the applicable nominal hole size and a plate thickness of 1.8mm.
2. Fir tree pull out force: 110 newtons (25 lbf) min in the applicable nominal hole size and a plate thickness of 1.8mm.
3. Cable tie min loop tensile strength: 225 newtons (50 lbf)

Notes:

1. Material: See chart
2. Material color: See chart
3. Maximum percent regrind permissible: 25%
4. Max allowable flash to be: 0.50mm
5. Max allowable mismatch to be: 0.10mm
6. Sheet metal thickness range: 0.60mm - 5.50mm
7. Applicable hole sizes:
 - A. M10 x 1.5 Threaded
 - B. 8.0mm +/-0.4
8. Bundle range: 2.0mm to 50.0mm

Global Part Description	Material	Color
T50ROSFT8M10SO25R-PA66HIRHSUV-BK	PA66HIRHSUV	Black

Revision Level			Revision Record	
Drawing	State	Part	ECN 016063	
03.1	Design Release	-		
Changed	Date (YYYY/MM/DD)			
Camposagrado	2020/08/12			
Approved	Date (YYYY/MM/DD)			
Fish	2020/08/12			



All drawing revisions are stored in CAD PDM database

The copyright of this drawing is reserved by HellermannTyton.

Drawn	Date (YYYY/MM/DD)
Camposagrado	2020/02/14
Approved	Date (YYYY/MM/DD)
Fish	2020/02/14

Units: **mm**
HellermannTyton
www.HellermannTyton.com

Title	Scale
T50 cable tie with 25mm offset and FT8/M10 fir tree	1:1
Global Project Number	Format
20-0131	A2
Drawing-No	Sheet
20-0131-001-CSU	1 / 1