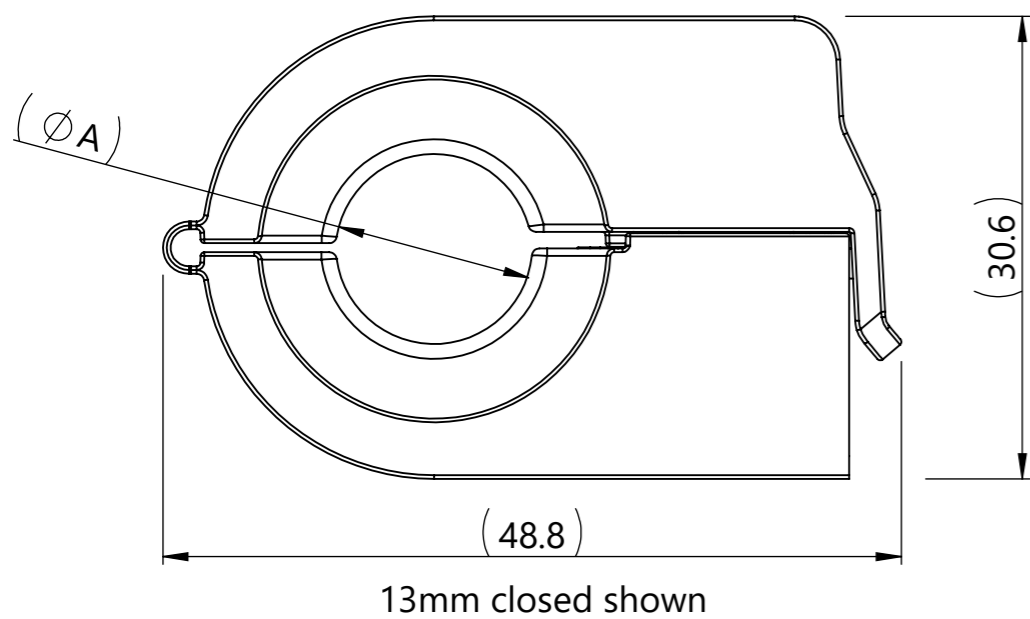
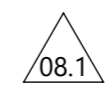


Section A-A



Performance requirements:  
 Dry as molded with  $\leq 0.5\%$  moisture content:  
 1. For use with M6 bolt torqued to 5Nm maximum



Notes:  
 1. Material: See chart  
 2. Material color: See chart  
 3. Maximum in-process regrind permissible: 25%

Global Project Number	Global Part Description	Material	Color	Dimension (A)
21-0319	HDHC13mm-PA46-BK	PA46	Black	13.0
21-0320	HDHC15mm-PA46-BK	PA46	Black	15.0

Revision level		
Drawing	State	Part
08.1	Design Release	-
Changed	Date (YYYY/MM/DD)	
Uhler	2024/02/14	
Approved	Date (YYYY/MM/DD)	
Vaughn	2024/02/14	

Revision Record	
ECN 310835	

The copyright of this drawing is reserved by HellermannTyton.

All drawing revision are stored in CAD PDM database

Drawn	Date (YYYY/MM/DD)
Uhler	2022/05/23
Approved	Date (YYYY/MM/DD)
Vaughn	2022/05/23

Title	Single Sided Heavy Duty Hinge Clamp (HDHC)	Scale	2:1
Drawing-No		Global Project Number	
21-0320-001-CSU		21-0320	
		Format	A3
		Sheet	1/1

**HellermannTyton**  
 www.HellermannTyton.com