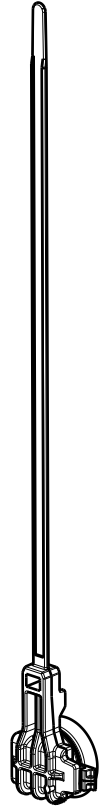
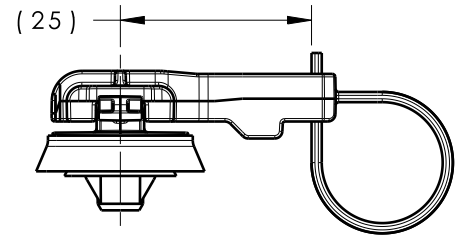
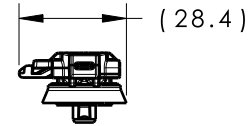
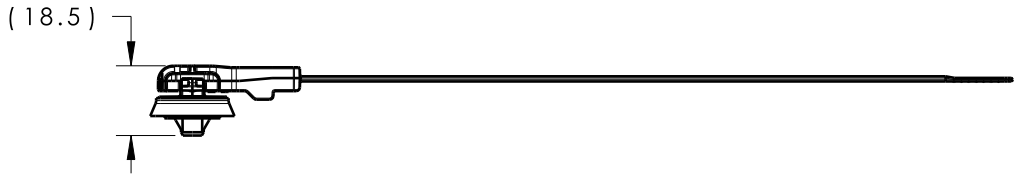
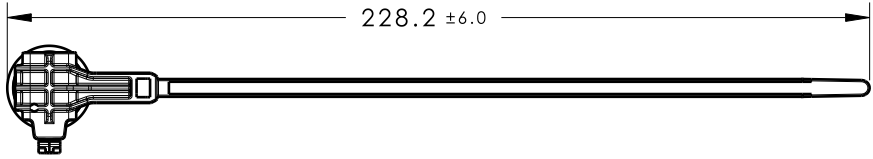


Revision Level			Revision Record	Changed	Date	Approved	Date
Drawing	State	Part					
02.1	Design Release		SEE ECN# 014907	EJF	2/7/19	KVH	2/7/19



ISOMETRIC VIEW

REFERENCE:

1. APPLICABLE HOLE SIZES:

A. 6.5mm +/-0.4mm

B. 6.35mm HEX +/-0.2mm

2. SHEET METAL THICKNESS RANGE: 1.20mm - 1.80mm

ASSEMBLED VIEW  
SCALE 1:1



GLOBAL PART DESCRIPTION	BUNDLE RANGE	CABLE TIES			MOUNT		
		DRAWING	MATERIAL	COLOR	DRAWING	MATERIAL	COLOR
T50ROS25BCCSRAH1.4T-PA66HIRHSUV/TPE-BK/GY	2 TO 50	18-1179-001-CSU	PA66HIRHSUV	BLACK	16-0348-051-CSU	PA66HIRHS/TPE	GREY/BLACK

Material  
SEE CHART  
COLOR: SEE CHART

Units millimeters  
Tolerance defined on each dimension

The copyright of this drawing is reserved by HellermannTyton. It is issued on condition that it is not reproduced, copied or disclosed to a third party, either wholly or in part, without the consent of HellermannTyton.

Drawn EJF 3/29/18  
Approved KVH 3/29/18

**HellermannTyton**

North America  
Email: corp@htamericas.com  
Web: www.hellermann.tyton.com

Article/Type-No T50ROS25BCCSRAH1.4T  
Title CC11 25mm B-SERIES OFFSET CABLE TIE WITH SEALED ROUND 1.4T ARROWHEAD  
Drawing-No Production : Phase  
**18-1181-001-CSU**

Scale 1:2  
Project Number 18-1181  
Format AH  
Sheet 1/1