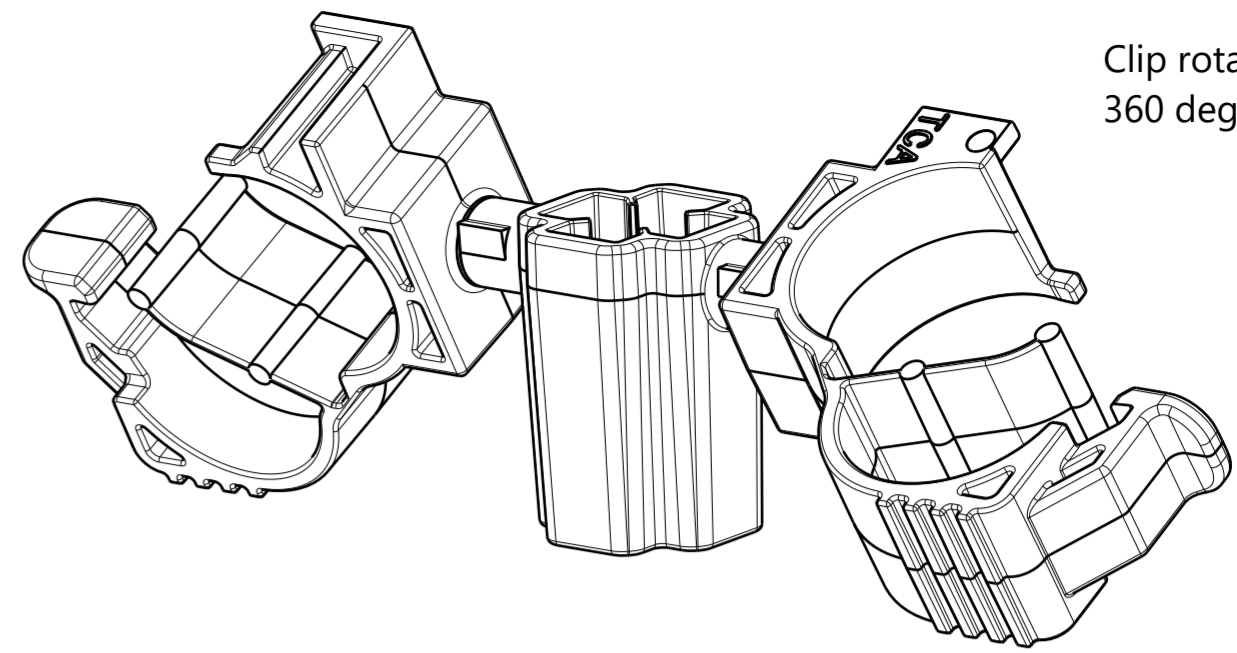
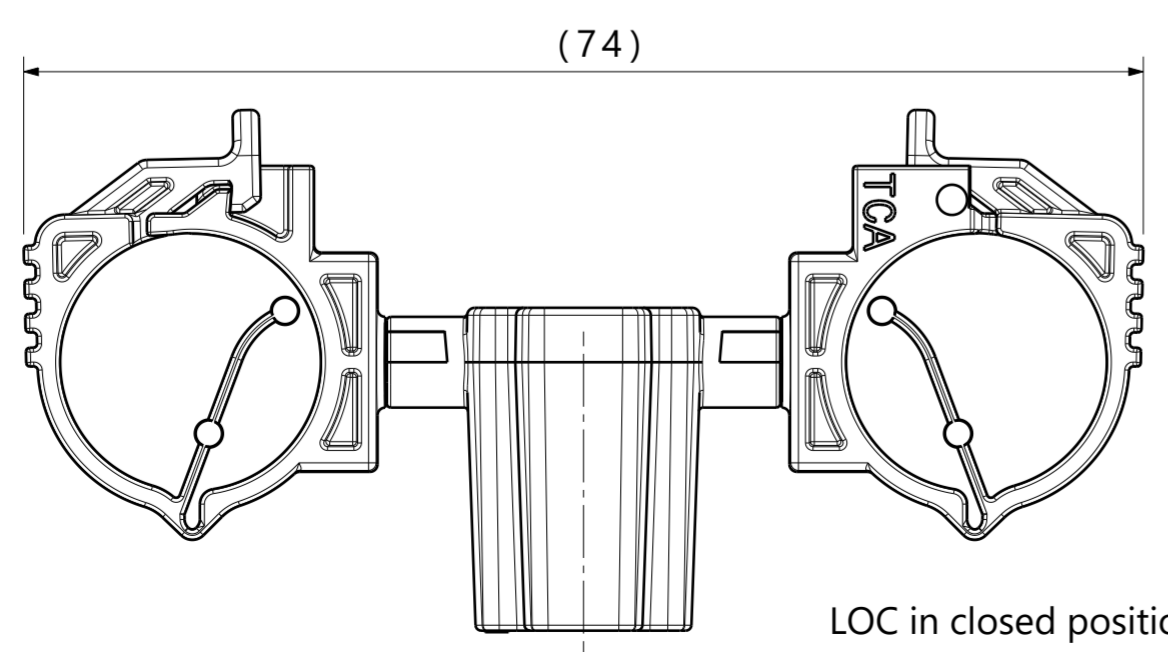
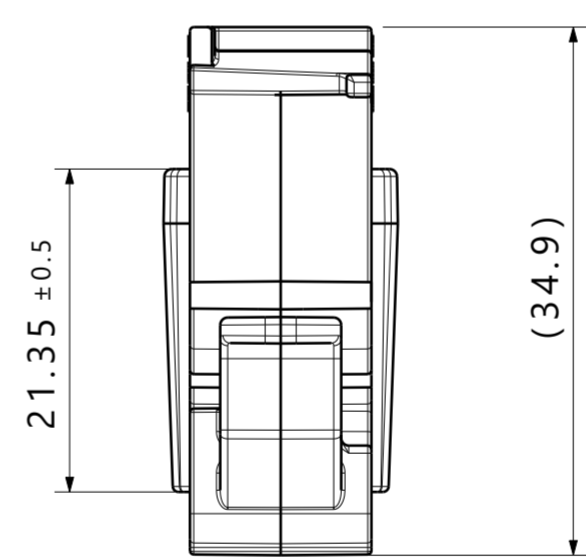
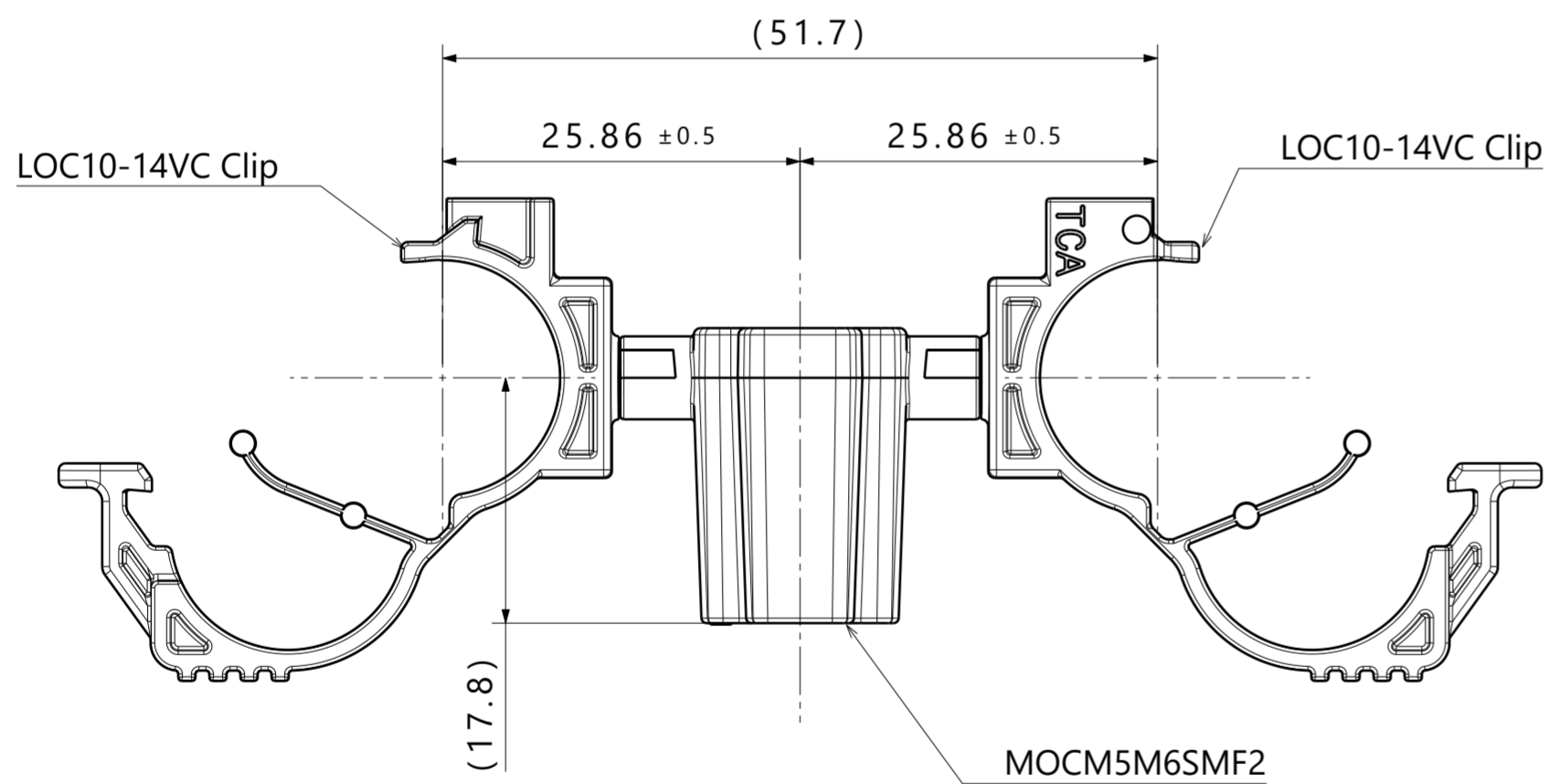
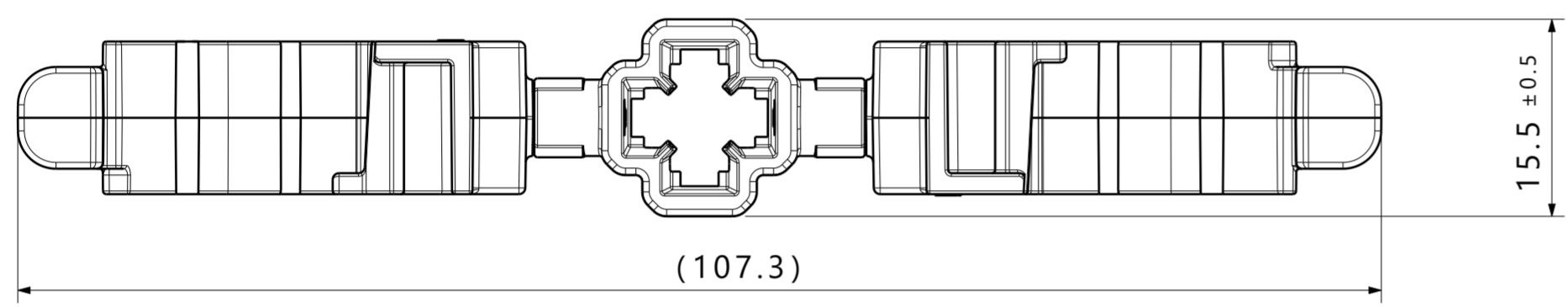


Isometric view



Isometric view - Rotated

Clip rotate  
360 degrees



LOC in closed position

Reference:

- Performance requirements at dry as molded:
1. Stud mount push on force: 45 newtons (10 lbf) max on each applicable stud size.
  2. Stud mount pull off force: 110 newtons (25 lbf) min on each applicable stud size.

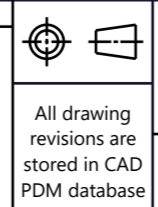
Notes:

1. Material: See chart
2. Material color: See chart
3. Maximum percent regrind permissible: 25%
4. Max allowable flash to be: 0.25mm
5. Max allowable mismatch to be: 0.1mm
6. Applicable stud size:
  - A. M5 x 0.8
  - B. T5
  - C. M6 x 1
  - D. T6

\*Rotational orientation of clips upon delivery is not controlled

Global Parts Description	Part	Drawing	Material	Color
SMF2LOC10-14X2-PA66HIRHSUV-BK	LOC10-14VC	11-0594-031-CSU	PA66HIRHSUV	Black
	MOCM5M6SMF2	19-0239-001-CSU	PA66HIRHSUV	Black

Revision Level			Revision Record			The copyright of this drawing is reserved by HellermannTyton.	Drawn	Date (YYYY/MM/DD)	Title	Scale
Drawing	State	Part	ECN	Date	By		Duncan	2020/09/30		
<b>02.1</b>	Design Release	-				Approved			Global Project Number	
Changed	Date (YYYY/MM/DD)					Karabon	2020/09/30		19-1703	
									Format	
Klos	2022/01/20								A2	
Approved	Date (YYYY/MM/DD)								Sheet	
Cottrill	2022/01/21								1 / 1	



Units: mm  
**HellermannTyton**  
www.HellermannTyton.com

Drawing-No: **19-1703-101-CSU**